

## Video Surveillance Integrated with Access Control System

# STARWATCH VIEW PRO



### Key Features

- Video monitoring and management function integrated with access control system
- Easy to be added on access control system software (iTDC PRO I / II, DUAL PRO I / II, LX ACCESS PRO I / II)
- Supports DVR, Web Server and Web Camera
- Multi monitors support (16ch per each Monitor)
- Sequential view available
- Access control event and video image (Jpeg, Avi file) cooperated to provide high security
- Record user defined pre-alarm recording time
- Support various kinds of DVR, Web camera
- Support up to 30fps per each channel (Depends on DVR or Web Server)
- Supports PTZ device
- Support full duplex sounds
- Support Web for remote control and monitoring
- Able to set up for frame rate, compression, resolution, motion detection area, etc
- Easy configuration with Auto search function for LAN connected machine
- User defined map and camera display
- Protection by ID/Password



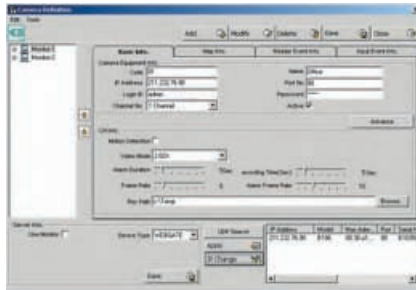
### Main Surveillance Screen

- Multi-channel display (1,2,4,6,8,9,12 and 16ch. monitoring available)
- Continuous surveillance
- Event Log display, Event Map Display
- Records images when events occur
- Real-time Surveillance screen



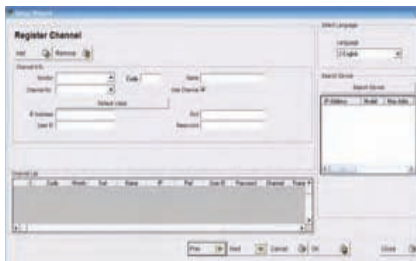
### Integrated Monitor Screen

- Displays event logs from access control units
- Displays map including controllable icons such as cameras, doors, and sensors
- Pop up screen which shows location with a real-time image appears when event occurs
- Displays recorded image logs
- Real-time surveillance screen



### View Pro Player

- Control playing speeds (0.5x, 1x, 2x, 4x)
- Reverse playing possible
- Supports continuous play mode
- Able to export to image or video files (Jpeg, Avi file)



### Camera Definition

- Multi monitor Setting
- DVR or web server selection (Win4Net, Chance-i, Seyeon tech)
- Auto IP detection for connected device
- PTZ and Full duplex sound setting
- Able to set various recording options according to type of event
- Map file setting including camera
- Step by step initial settings and data input via Setup Wizard

## System Configuration

